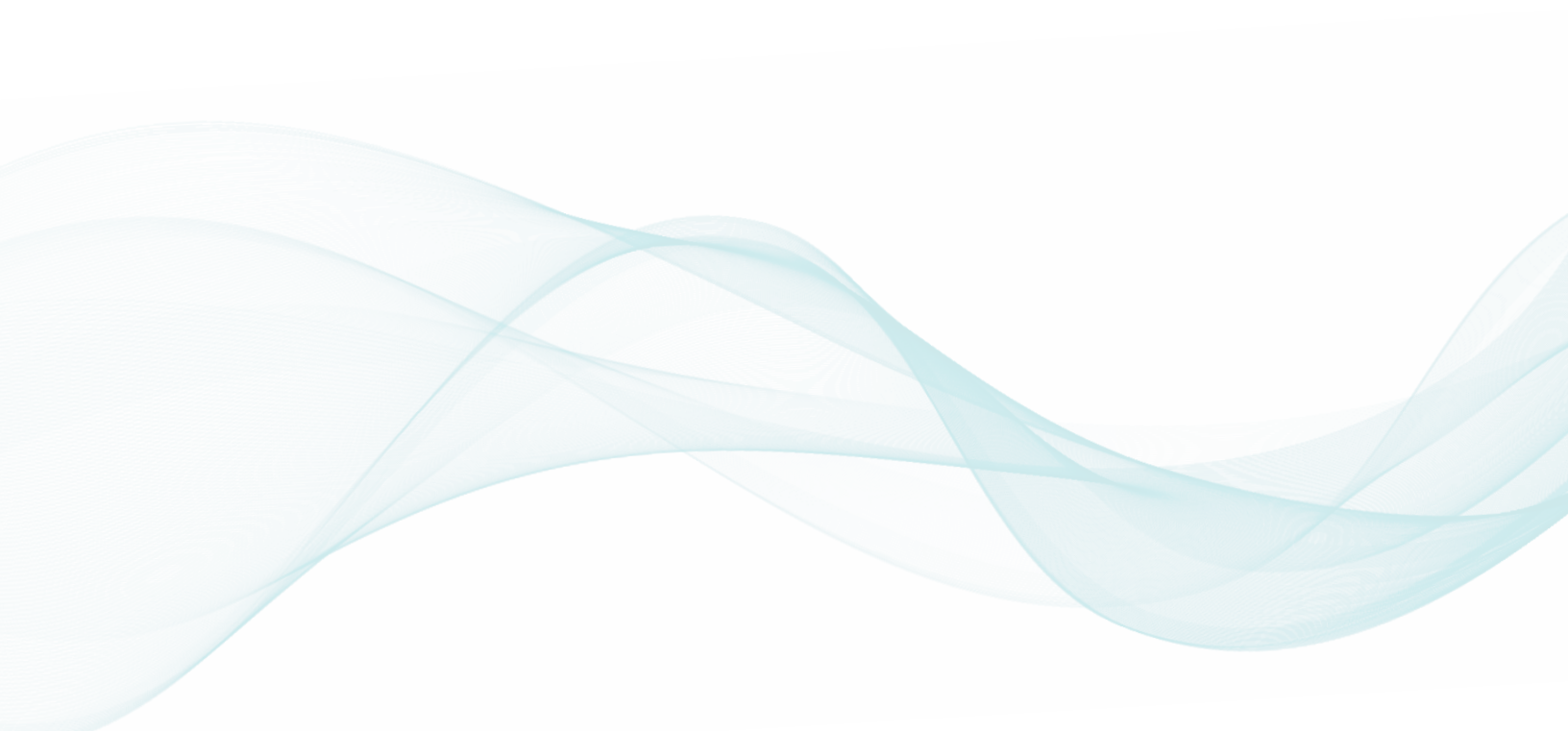
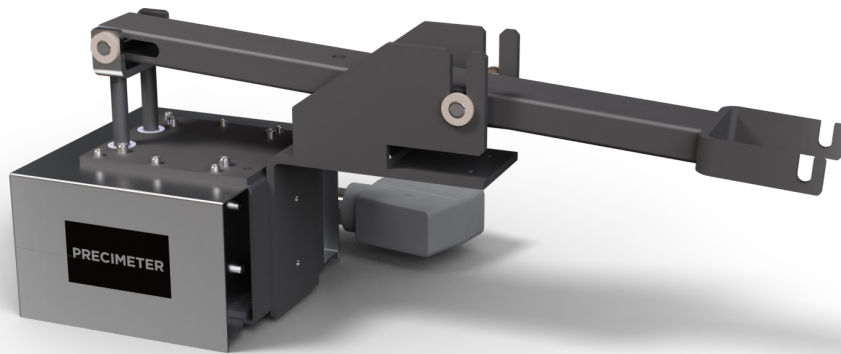


PRECIMETER

Molten metal level control

PXP-2LP – Pin Position Actuator





PXP-2LP – Pin Position Actuator

The Pin Position Actuator PXP-2LP is primarily used to control the flow of molten metal through a pin-plug valve in for instance ingot casting. The PXP-2LP actuator offers a lower height profile over the through or launder than the

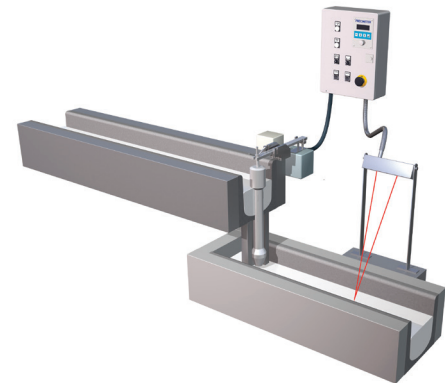
PXP-2(E). This means that it can be used in areas where space above the through or launder is restricted. This actuator can easily be adapted to fit any through configuration.

ADVANTAGES

- ✓ Low profile version
- ✓ Accurate control
- ✓ Robust design
- ✓ Easy installation
- ✓ Minimal maintenance
- ✓ Terminal connection for parameter settings
- ✓ Ethernet protocol (optional)

Vertical drop control with PXP-2LP pin

positioner. The Precimeter pin position actuator PXP-2LP connected to the ProH and an MLC control panel form a system which very precisely controls the molten metal level, in for example a tundish or a DC slab casting mould.



Technical Specifications

Stroke range	6-50.4 mm (0.25-2.0")	Operation signals:	
Accuracy	±0.38 mm	Arm/rod position	4-20mA (0-100%)
Pin load range	100N	Calibration	24 VDC
Positioning	Stepper motor	Feedback signals:	
Power requirement	24 VDC < 1 A	Arm/pin position	4-20mA (0-100%)
Cooling	Compressed air (1/4" connection)	Internal Temp Output	4-20mA (0-100°C)
Interface	Serial communication	Ethernet Protocol	Optional (Profinet, Ethernet IP or Modbus TCP)

PXP-2LP includes a 10 pin industrial heavy duty connector.