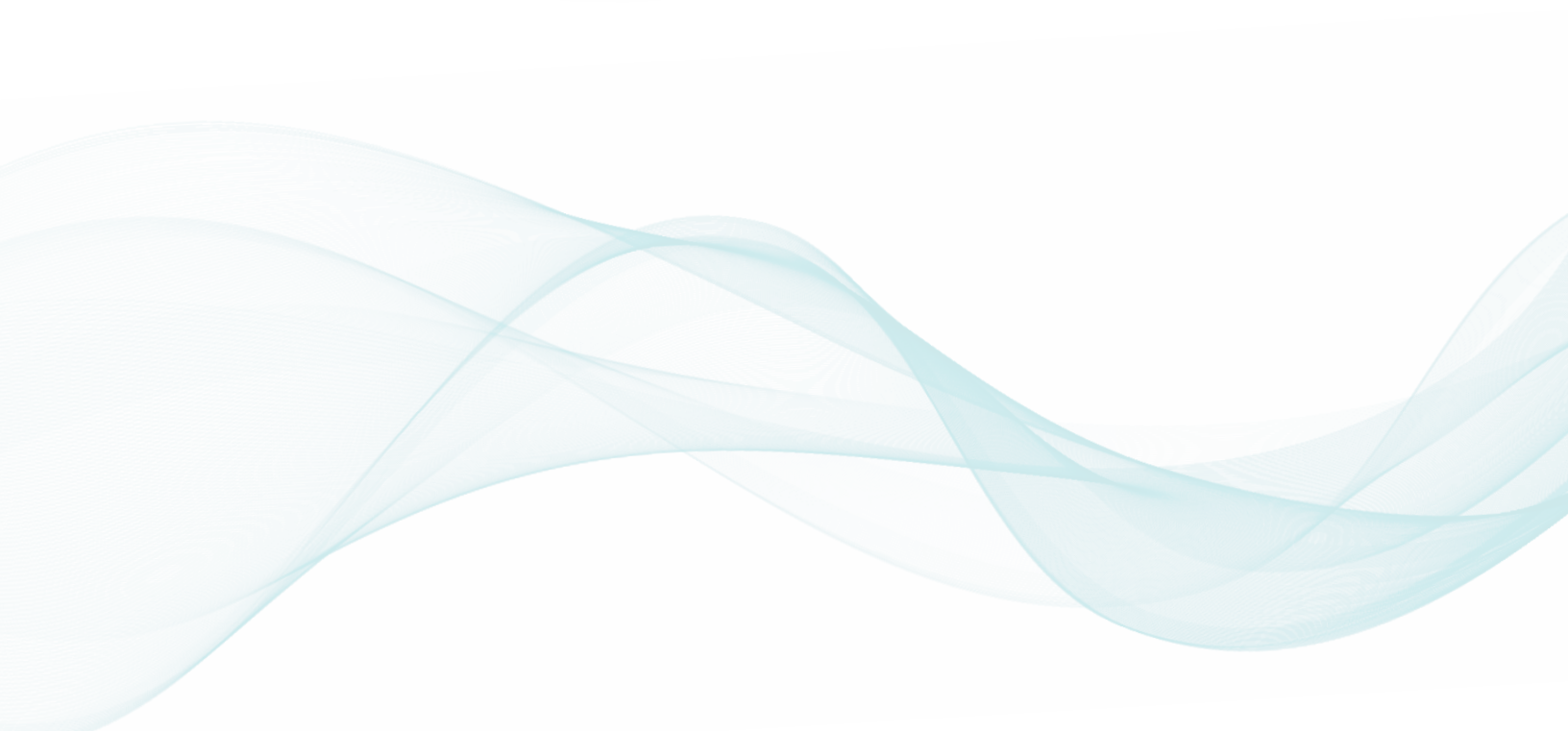
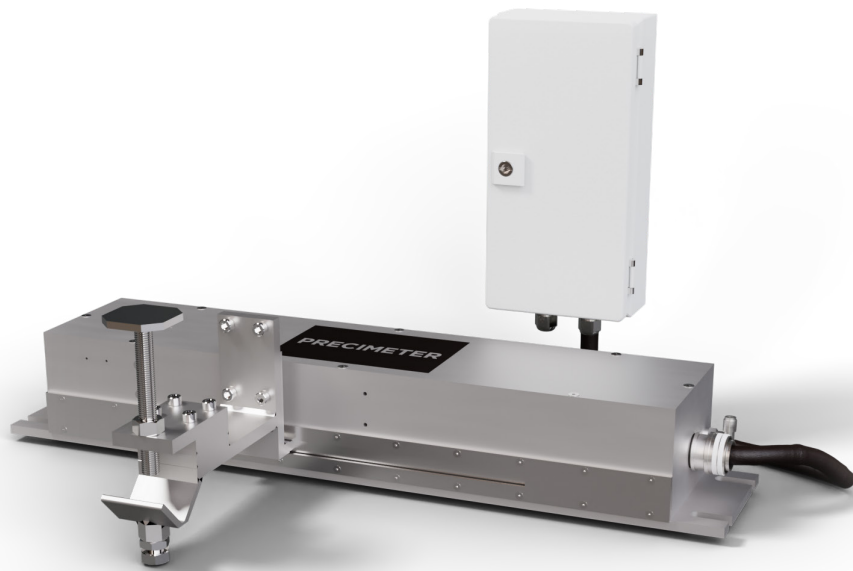


**PRECIMETER**

Molten metal level control

# **TXP-10** – Tap Out Actuator





# TXP-10 – Tap Out Actuator

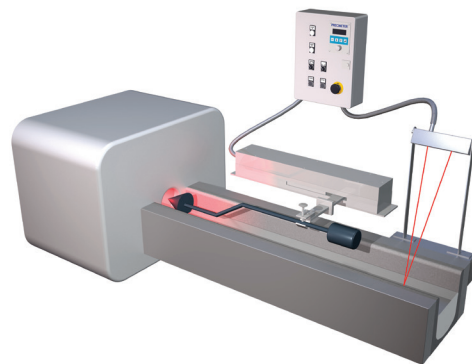
The Tap Out Actuator TXP-10 is primarily used to control the flow of molten metal launder at the exit tap hole of a stationary furnace.

The TXP-10 can be mounted vertically with a special linkage arm system which has a stroke of 101 mm (4").

## ADVANTAGES

- ✓ Accurate control
- ✓ Robust design
- ✓ Easy installation
- ✓ Minimal maintenance
- ✓ High load capacity
- ✓ Flexible mounting options
- ✓ Available with two stroke lengths
- ✓ Terminal connection for parameter settings
- ✓ Ethernet protocol (optional)

**Furnace tap out control with TXP-10 Tap Out Actuator.** The Precimeter TXP-10 actuator connected to the ProH and an MLC control panel form a system that accurately controls the molten metal level and flow out of the stationary furnace.



## Technical Specifications

Stroke range	32-254 mm (1.25"-10")
Accuracy	±0.24 mm
Closing force	1000N
Positioning	Stepper motor
Power requirement	24 VDC < 1A
Cooling	Compressed air (1/4" connection)
Interface	Serial communication

### Operation signals:

Arm/rod position	4-20mA (0-100%)
Calibration	24 VDC

### Feedback signals:

Arm/pin position	4-20mA (0-100%)
Internal Temp Output	4-20mA (0-100°C)
Ethernet Protocol	Optional (Profinet, Ethernet IP or Modbus TCP)

TXP-10 includes one heavy duty connector with control box.